

Technique Sampler Bag

Introduction

This construction of this bag is designed to provide a tutorial in specific knitting techniques. These instructions can be used by any level of knitter, from beginning to advanced

Techniques used in the creation of this bag include:

- Knitting & Purling in the round on circular needles
- Picking up stitches
- Using stitch markers
- Using slipped stitches to create corners.
- Ribbing
- Cabling & Lace Work (advanced knitters)
- Creating a pocket
- Creating a knitted facing
- Creating buttonholes

This bag is designed to be knit of Super-Bulky yarn using size 13 circular needles. It will have a simple (but attractive) dishtowel lining, a pocket, handles and an optional closing flap.

I'd also be very happy for you to bring in other projects that you're currently working on if you would like a little extra help - perhaps some of the techniques we'll be learning on the tote bag will help you with something you're currently trying to finish.

I am available to make up class sessions or work with students privately to clarify specific techniques that may require a bit of one-on-one skill. I am most easily reached by email (annie@modecard.com)

Technique Sampler Bag

Making the Twisted Cord

Still holding one end of the yarn in your left hand, with your right hand pinch the twisted yarn midway between yourself and the doorknob. Bring the ends of the yarn together by moving toward the doorknob, but **DO NOT LET GO OF THE MIDDLE OF THE RIBBON**. You may need a friend for this.



Carefully match the ends and readjust the pinched area to reflect the true midpoint of the twisted yarn. Holding onto the ends of the yarn, let go of the pinched midpoint - it will twist around itself.






Still holding tight to the ends so the twisted yarn doesn't unwind itself, loosen the yarn end from the doorknob and tie both ends together with a small slip knot. You can pull the twisted yarn back and forth between your thumb and index finger to even out the twists if necessary.




Technique Sampler Bag

Chart Symbol Key

 or  K1 on right-side (RS) rows,
P1 on wrong-side (WS) rows

 P1 on RS rows,
K1 on WS rows

 **YO - Yarn Over:** Yarn forward and
over needle to make a stitch
(increase 1 st)


 **M1K - Make 1 Knitwise:** Insert needle into
stitch below next stitch and knit, then knit
next stitch (increase 1 st)

 **M1P - Make 1 Purlwise:** Insert needle into
stitch below next stitch and purl, then purl
next stitch (increase 1 st)

 **4 st Left Cable** - Slip 2 sts to cable
needle and hold at front, k2, k2 from
cable needle.

 **4 st Right Cable** - Slip 2 sts to cable
needle and hold at back, k2, k2 from
cable needle.

 **K2 tog-RS - Knit 2 tog Right Slant**
In Western Style: K2tog. *In Combined Style:* Slip next two sts to RH
needle then slip them *back* onto LH needle so they are 'facing' to the
left. Starting with the 2nd stitch on the LH needle, slip RH needle
through two the front loop of both stitches, k sts tog.

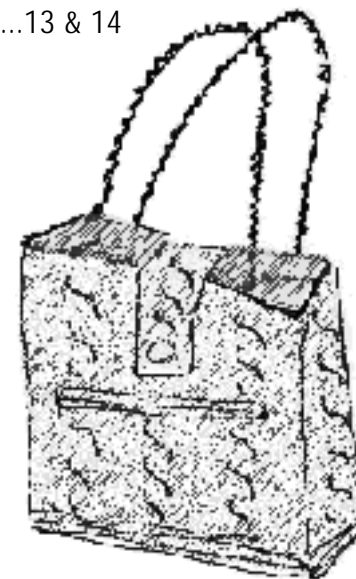
 **K2tog-LS - Knit 2 tog Left Slant**
In Western Style: K2tog TBL - Slip RH needle into next 2 sts on LH
needle through the back loops, k2 sts together. *In
Combined Style:* K2 tog.

 **VDD - Vertical Double Decrease:** Sl 2 sts as if to work k2
tog, k1, pass slipped sts over (decrease 2 sts)

Technique Sampler Bag

Table of Contents

Introduction.....	1
Class Topics.....	2
Knitting Instructions	
Bag Bottom, Picking up Stitches	3
Bag Sides, Setting up Cables.....	4
Cable Charts	
Chart A - Alternating Cable.....	5
Chart B - Simple Cable.....	6
Chart C - X-O Cable.....	7
Chart D - Braided Cable.....	8
Chart Symbol Key.....	15
Making the Pocket.....	9
Making the Flap & buttonhole.....	10 & 11
Finishing.....	12
Twisted Cord.....	13 & 14



Technique Sampler Bag

Instructions

Items Required to Make the Bag

- 200 - 260 yds Super Bulky Yarn
or 2 strands of Bulky Yarn knit together
- or -
- 350 yds Worsted / Sport Weight Yarn
- Needles to achieve gauge desired
(est size 13 for superbulky, 10 for worsted)
- Stitch Markers (10 plus 1 contrasting)
- Darning Needle
- Button (Optional)
- Cotton Dish Towel for Bag Lining (Optional)

Instructions are written for Superbulky with Worsted / Sport Weight figures in parenthesis. Where there is only one number it applies to both fiber weights.

BAG BOTTOM

Cast on 14 (26) sts. Work in garter stitch for 24 (48) rows. Bind off, pull yarn through last bound off loop to secure end, but do not cut yarn.

PICKING UP STITCHES

Starting at bound off corner and working along LONG edge of rectangle, use uncut yarn to pick up 24 (48) stitches along entire edge. Place marker, Pick up one stitch at corner, place marker, pick up 12 (24) sts along short edge, place marker, pick up 1 st at 2nd corner, place marker, pick up 24 (48) sts along long edge, place marker, pick up one stitch at 3rd corner, place marker, pick up 12 (24) sts along short edge, place marker, pick up one stitch at last corner, place contrasting marker - 76 (148) sts total.

Technique Sampler Bag

Finishing

FINISHING

Steam block bag with an iron. Turn bag inside out and fit lining (a cotton dishtowel works well) over wrong side out bag. Turn upper facing over, covering top of lining - pin in place. Hand stitch (whip stitch) lining in place.

Make twisted cord handles (See images below) Stitch handles in place. Sew button on pocket to correspond with flap buttonhole.

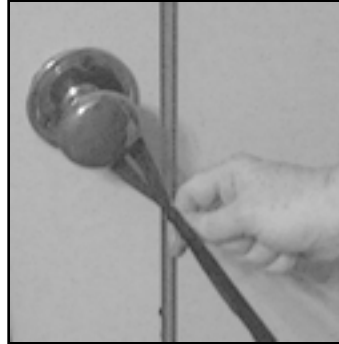
Technique Sampler Bag

Making the Twisted Cord

Making the Twisted Cord Handle

To make the twisted cord measure a length of yarn that is nine times the desired length of the handle.

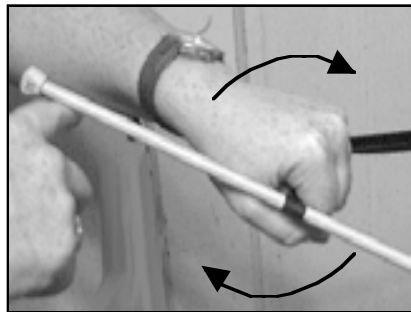
Fold the yarn in half twice and put a slip knot in the end with the two cut edges. Loop a piece of waste yarn through this slip knot and tie around a doorknob - stand far enough away from the doorknob so that the yarn hangs in midair and does not touch the ground.



Lay the other end of the yarn - the double folded end - in your left palm and close your hand around it so that a loop hangs out by your thumb.



Slip a pencil, knitting needle or any other long object in this loop and twirling it around while still holding the yarn loosely in the left hand, begin to twist the yarn around itself. Continue twisting until the yarn is **quite** taut and **evenly** twisted along its' length.



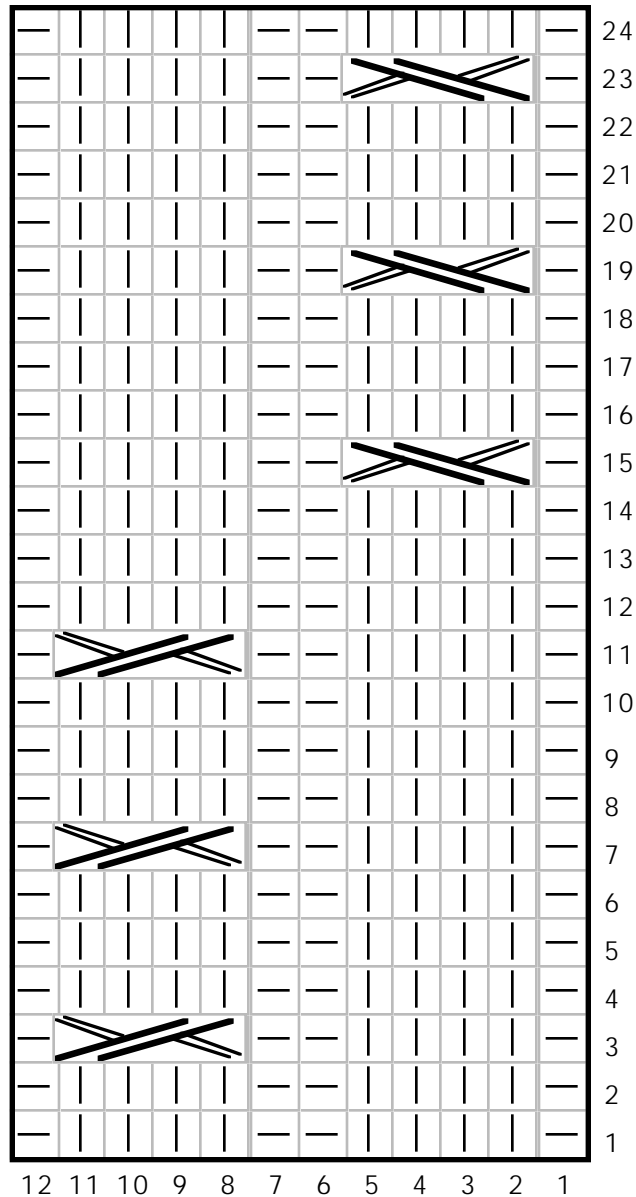
Technique Sampler Bag

The class will break down in the following manner. This is not carved in stone - if the class seems to want or need to work on a particular skill, we can adjust the schedule to accommodate the needs of the class.

- | | |
|---------|--|
| Class 1 | Making the bottom of the bag
Gauge - what's all the fuss?
Picking up stitches
Your friend the stitch marker
Zoom on your own |
| Class 2 | Establishing cables
Discussion of charts
Different ways to twist a stitch |
| Class 3 | Creating a pocket & pocket welt
Inserting a pocket |
| Class 4 | Continued Work on Bag
Catching Up & Special Topics |
| Class 5 | Diagnostic- problems or questions?
Focus on special topics |
| Class 6 | Finishing touches - blocking, lining
Follow up on any unfinished business
New techniques? |

Technique Sampler Bag

Chart A - Alternating Cable



Technique Sampler Bag

Flap & Buttonhole (Optional)

FLAP

With a single strand of yarn, size 13 needles and the outside of the bag facing you, pick up center 12 (24) sts from top of long side which does NOT have the pocket. Next row: (WS) Set up flap as follows: k2 (4) sts, p8 (16) sts, k2 (4) sts. Next row (RS) k12 (24). Continue working in this manner, working center of flap in st st and outer edges in garter stitch, until flap reaches over the bag to 1/2" below the pocket welt. End with a WS row. (note: buttonhole size will depend on size of button - these instructions are written for a 1" button.)

BUTTON HOLE - Super Bulky Yarn

Next row (RS) k5, bind off 2 sts, k5

Next row (WS) k2, p3, cast on 2 sts, p3, k2

Next row (RS) K12

Next row (WS) k2, p8, k2

BUTTON HOLE - Worsted Weight Yarn

Next row (RS) k10, bind off 4 sts, k10

Next row (WS) k4, p6, cast on 4 sts, p6, k4

Next row (RS) K24

Next row (WS) k4, p16, k4

Technique Sampler Bag

Flap (cont'd)

Continue repeating last 2 rows until flap measures 1" beyond buttonhole. Create pointed flap end by decreasing as follows:

Super Bulky Yarn

Next row (RS) k5, k2tog, k5 (11 sts rem)

Next row (and all WS rows) k2, pur1 to last 2 sts, k2

Next row (RS) k4, VDD, k4 (9 sts rem)

Next RS Row, k3, VDD, k3 (7 sts rem)

Next RS Row, k2, VDD, k2 (5 sts rem)

Next RS Row, k1, VDD, k1 (3 sts rem)

Next RS Row, VDD

Worsted Weight Yarn

Next row (RS) k11, k2tog, k11 (23 sts rem)

Next row (and all WS rows) k4, pur1 to last 4 sts, k4

Next row (RS) k10, VDD, k10 (21 sts rem)

Next RS Row, k9, VDD, k9 (19 sts rem)

Next RS Row, k8, VDD, k8 (17 sts rem)

Next RS Row, k7, VDD, k7 (15 sts rem)

... continue in this manner until 3 sts rem on needle...

Next RS Row, VDD

Pull yarn through last stitch, weave in ends.

Technique Sampler Bag

Instructions (Cont'd)

BAG SIDES - GARTER STITCH & SLIPPED CORNER STITCHES

Next round - *k24 (48), slip marker, k1, SM, K12 (24), SM, k1, SM,* repeat between stars.

Next round - *P24 (48), slip marker, Slip1 stitch, SM, P12 (24), SM, Slip1 stitch, SM,* repeat between stars.

Repeat the previous two rows 4 times, creating 8 rows of garter stitch with a slipped stitch at each corner every other row.

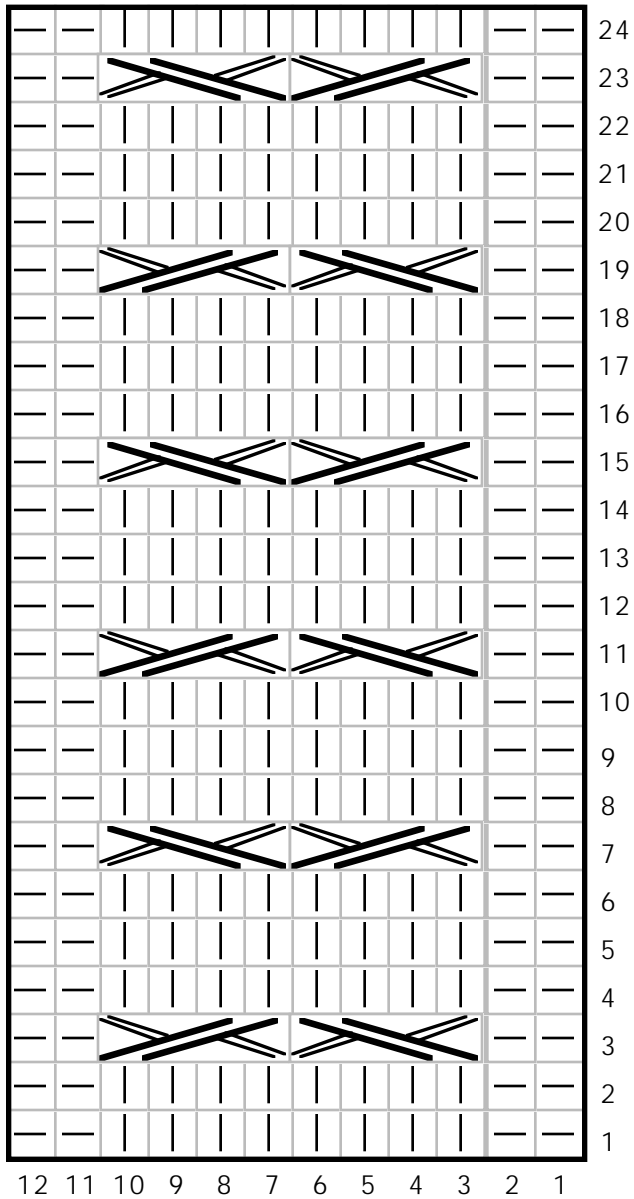
SETTING UP CABLES

Choose whether you would prefer to use the complex or the simple cable motif. If a student chooses, they do not have to use a cable, but could do a simple rib stitch around the entire bag. Each cable motif is 12 sts so the student can mix and match easily around the bag. If desired the bag can be worked in stockinette stitch, but bear in mind that a rib or cable will give more body and strength to the bag. (much in the way that corrugated boxes are stronger than plain cardboard.)

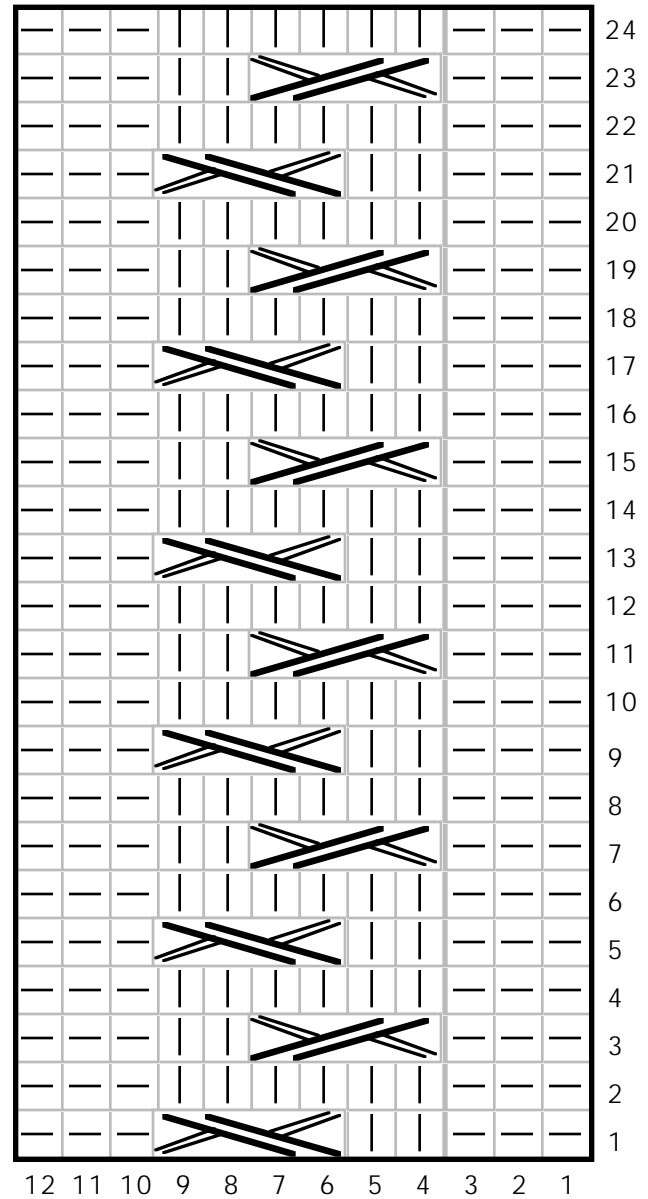
Each cable chart is 12 sts so that 2 (4) chart repeats will fit on a long sides of the bag, 1 (2) chart repeats will fit on the short ends. If you like, you can mix & match the motifs, or just use one and repeat it all the way around the bag.

Following the chart(s), set up the first row of the chart working around the bag until one round is completed. In the first round and every odd round of the charts slip the corner stitches, in the even rounds knit the corner stitches. Work in cable chart as established until bag half of desired finished depth.

Technique Sampler Bag
Chart C - X & O Cable



Technique Sampler Bag
Chart D - Braided Cable



Technique Sampler Bag

Making The Pocket

MAKING A SIDE POCKET

Using a separate strand of yarn cast on 12 (24) sts. Work in st st for until desired pocket depth. Slip stitches onto stitch holder

MAKING THE POCKET WELT

Determine which side of the bag would best be suited for a pocket. Continue working n pattern as established - work so that the total bag measurement from the picked up row is at least as deep as the pocket depth.

Next round: work to the first stitch past the corner stitch of the designated 'pocket side' - Slip marker. Work 6 (12) sts in pattern as established, place contrasting marker to mark pocket start position, P12 (24) sts, place marker. Work last 6 (12) sts in pattern as established.

Next round: Work around entire bag to first marker of pocket, K 12 (24) sts.

Repeat last 2 rounds 3 (5) times, creating a garter stitch pocket welt and continuing in chart pattern as established everywhere else.

Next round: work to contrasting marker, bind off next 12 (24) sts in pattern. Work around entire bag to start of pocket.

INSERTING THE NEW POCKET

Work to first bound off stitch. With right side of pocket facing the WS of the bag, slip the 12 (24) sts from the stitch holder onto the left hand needle and work these sts in the established chart pattern. Work as established until bag is desired depth from picked up stitch row. Next round: pur1. Next 5 rounds: knit. Bind off all sts.

Technique Sampler Bag

Chart B - Simple Cable

