

LANARK PLAID COWL

Just enough color and warmth to bring a grey Winter's day to life! Wear this around the neck, up over the head or twist the end to convert it into a neat little hat. You'll LIVE in this cowl, and you'll want one in every colorway combination!

CONSTRUCTION

For the entire piece colors A & B will be used as the wide vertical strips of the cowl, the "Warp" in weaving terms. Working as the weft, the "Slip Stitch Color" will create the narrower horizontal bands of color. To create these different colors, the opposite ends (Ends 2) of balls A & B and both ends of Color C will be used, creating a total of 4 different Slip Stitch Colors & 2 Vertical Stripe Colors (6 colors in all) from 3 separate balls of gradient dyed yarn. You will determine which ends of the ball yarns is End 1 (the center pull end) and End 2 (the outside of the ball).

Sizes:

XS (S, M, L, XL)

Finished Measurements:

Cowl Width: 15 1/2"/40cm

Cowl Circ: 11 3/4 (17 1/2, 23 1/2, 29 1/4)"/30 (44.5, 60, 74.5) cm

Skill Level:

K 3 Intermediate

Fiber:

ModeKnit Yarn, ModeBulk,
(106yds /97m 3.5oz /100gr) per skein
Yarn A - Thistle [Cal],
Yarn B - Loch Ness [Cal],
Yarn C - A Wee Dram [Cal],

Needle:

11 US/8mm circ

Gauge:

14 sts x 30 rows = 4"/20cm in Plaid Patt

Notions:

Waste yarn for CO, stitch marker, darning needle

STITCHES & SPECIAL TECHNIQUES

Provisional Cast On

A Cast On which can be removed later, leaving live stitches to be worked. One method is to crochet a chain in waste yarn a few more sts than you'd like to cast on. Tie off the chain end, place a knot in the tail. Slip your needle into the bump at



the back of each chain, creating a "stitch". Loosen and pulled off at the knotted end when desired.

Sl 1 - Slip One

The default for slipping a stitch, unless a pattern says different, is to move (or keep) the yarn to the WS of the work, insert needle purlwise into stitch & slip it. That's how to slip sts in this pattern.

3 Needle Bind Off

1. Place the two pieces on knitting needles so the right sides of each piece are facing each other with the needles parallel.

2. Insert a third needle one size larger through the leading edge of the first stitch on each needle (knitwise)

3. Knit these stitches together as one, leaving 1 st on RH needle.

4. Repeat steps 2 & 3 and slip older stitch on LH needle over newer stitch.

Repeat step 4 until all sts are bound off. Cut yarn, pull through last stitch.

COWL BODY

With End 1 of A and a piece of waste yarn and circular needles at least 24"/62cm long, provisionally cast on 24 sts. Switch to End 1 of B and provisionally CO 22 — 46 sts total.

Next Row (WS): Turn work, purl 22 in B, purl 24 in A.

PLAID MOTIF

Row 1 (RS): With A, k24; with B, k22 — 46 sts. Slip work back so a 2nd RS row is ready to be worked.

Row 2 (RS): With Slip St Color [k1, sl 1] rep across work.

Turn work.

Row 3 (WS): Purl 22 in B, purl 24 in A. Slip work back so a 2nd WS row is ready to be worked.

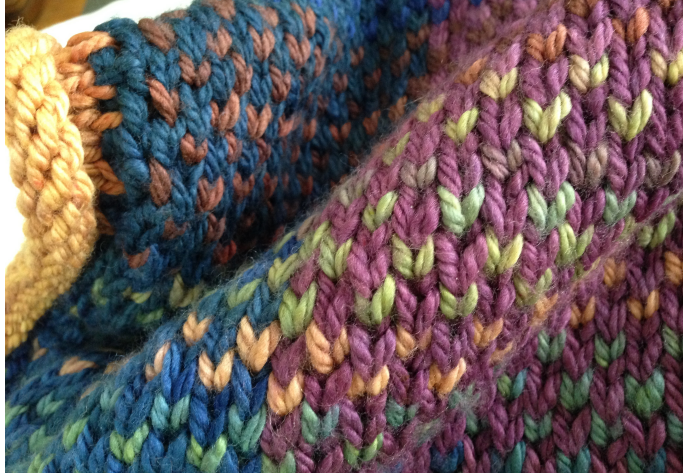
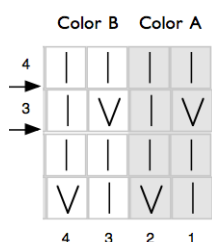
Row 4 (WS): With Slip St Color [p1, sl 1] rep across work.

44-Row Plaid Motif

Rows 1-16: Using Color C in Rows 2 & 4 as the Slip Stitch Color, work the last 4 rows a total of 4 times [16 rows total.] Break Color C.

Rows 17-28: Using opposite end (End 2) of Color B as the slip stitch color, work the 4 patt rows a total of 3 times [12 rows total.] Break End 2 of Color B.

Rows 29-32: Using End 2 of Color C as the slip stitch color, work the 4 patt rows a total of 1 time [4 rows total.] Break End 2 of Color C.



Rows 33-44: Using opposite End 2 of Color A as the slip stitch color, work the 4 patt rows a total of 3 time [12 rows total.] Break End 2 of Color A.

Repeat the above 44 rows, 88 (132, 176, 220) rows total (piece is approx 11 3/4 (17 1/2, 23 1/2, 29 1/4)"/30 (44.5, 60, 74.5) cm in length from CO.)

End with a WS row.

Creating the Tube

Carefully undo provisional CO and slip sts onto one end of the circ, arranging sts so the right sides of the cowl face each other, forming a tube. With a third needle, work a 3-needle bind off across all sts. Steam block tube, weave in ends.

Tube, Color B End

With either end of C and starting at the seam at the Color B edge of the tube, PU&K 40 (60, 84, 104) sts around work, place marker to note start of round. Knit 7 rounds, bind off all sts loosely.

Tube, Color A End

With either end of C and working at the Color A edge of the tube, PU&K 40 (60, 84, 104) sts around work, place marker to note start of round.

Round 1: [K2, p2] rep around work 10 (15, 21, 26) times

Round 2: Work in rib as est.

Rep Round 2 eight times more, 10 rows of rib. Bind off all sts loosely. Weave in ends, steam block both Tube Ends.

